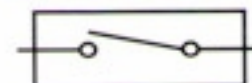


AIR CYLINDER

Series A03

Cat No A03 - 01 - 03

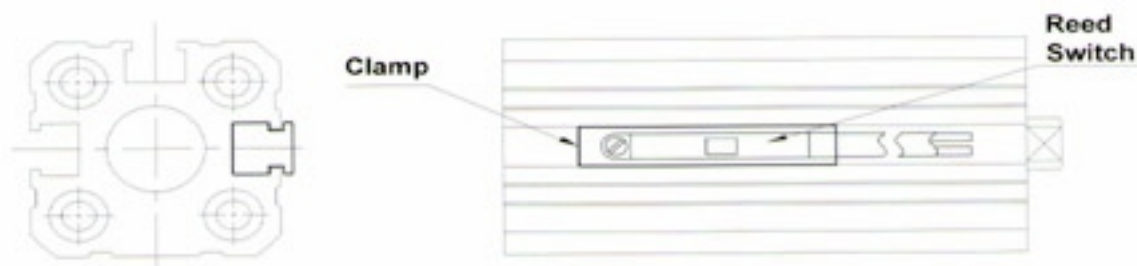
ACCESSORIES FOR MAGNETIC CYLINDERS Series A03



REED SWITCH

Function

The reed switch and clamp assembly is mounted on the Air cylinder (Series A03), for proximity sensing. The piston of the cylinder is equipped with a permanent magnet which activates the reed switch on approaching it. The reed switch closes the circuit giving an electrical signal, which could be used further as required. The accuracy of the sensing distance depends on the speed of operation of the piston.



Technical Specifications - Reed Switch

Model	AM2012 / AM2032
Suitable cylinder	A03 Series
Operating voltage	5 ~ 120V DC/AC
Switching current	100mA max
Switching rating	6W max.
Voltage drop	3.5V max.
Switching logic	SPST, Normally open
Operating temperature	- 10° to 70° C
Shock	30 G
Vibration	9 G
Type of protection	IEC 529, IP67
Colour of LED	Red
Cable	Ø2.8, 2C, PVC, 2Meter

Bore Dia	Ordering no. for Reed switch & Clamp
Ø12, Ø16, Ø20, Ø 25	AM2012
Ø32, Ø40, Ø50, Ø63, Ø80, Ø100	AM2032

Circuit and connect diagram

