

# SHUT OFF VALVE LOCKABLE

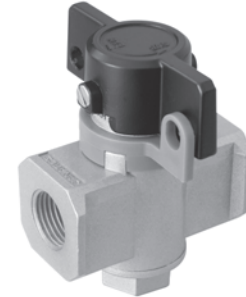
Series GS2

Cat No GS2 - 01 - 02

## SHUT OFF VALVE LOCKABLE - G1/4, G3/8, G1/2

### Features

- ❑ Modular mounting with FRL
- ❑ Port thread at both ends
- ❑ Sizes - G1/4, G3/8 & G1/2
- ❑ Window display to show the valve position ( i.e.) the valve is in On condition or Off condition



### Function

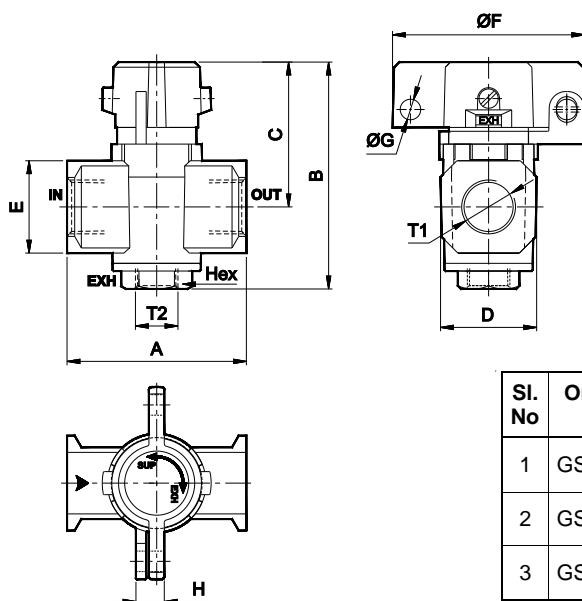
1. Opening and closing of airline with relieving of down stream pressure at closed condition.
2. The valve can be locked at the closing condition (Exhaust 2 → 3)

### Technical Specifications

|                           |      |                           |          |          |
|---------------------------|------|---------------------------|----------|----------|
| Model                     |      | GS245L61                  | GS246L62 | GS247L63 |
| Port size                 |      | G1/4                      | G3/8     | G1/2     |
| Type                      |      | 3/2                       |          |          |
| Operating pressure range  |      | 0 - 10 bar                |          |          |
| Ambient Temperature       |      | 5° - 60° C                |          |          |
| Flow ® (lpm)              | 1 →2 | 1000                      | 2200     | 3250     |
|                           | 2 →3 | 450                       | 1100     | 1600     |
| Materials of construction |      | Aluminium, Brass, Nitrile |          |          |

\* Inlet pressure 6 bar, and pressure drop 1 bar

Note : 1. While connecting the valve check the direction of the air flow as per ►  
2. 'Lock' - Not in the scope of supply.



| Sl. No | Ordering No. | T1   | T2   | Hex | A  | B  | C    | D    | E  | ØF | ØG  | H    |
|--------|--------------|------|------|-----|----|----|------|------|----|----|-----|------|
| 1      | GS245L61     | G1/4 | G1/8 | 17  | 45 | 73 | 43   | 28.5 | 22 | 40 | 3.5 | 8    |
| 2      | GS246L62     | G3/8 | G1/4 | 19  | 55 | 85 | 52   | 32.5 | 28 | 55 | 6   | 11   |
| 3      | GS247L63     | G1/2 | G3/8 | 24  | 70 | 94 | 56.5 | 37.5 | 36 | 75 | 8   | 11.5 |

### How to Order

While ordering Shut off valve lockable, mention the ordering number given in the corresponding tables.

Subject to change